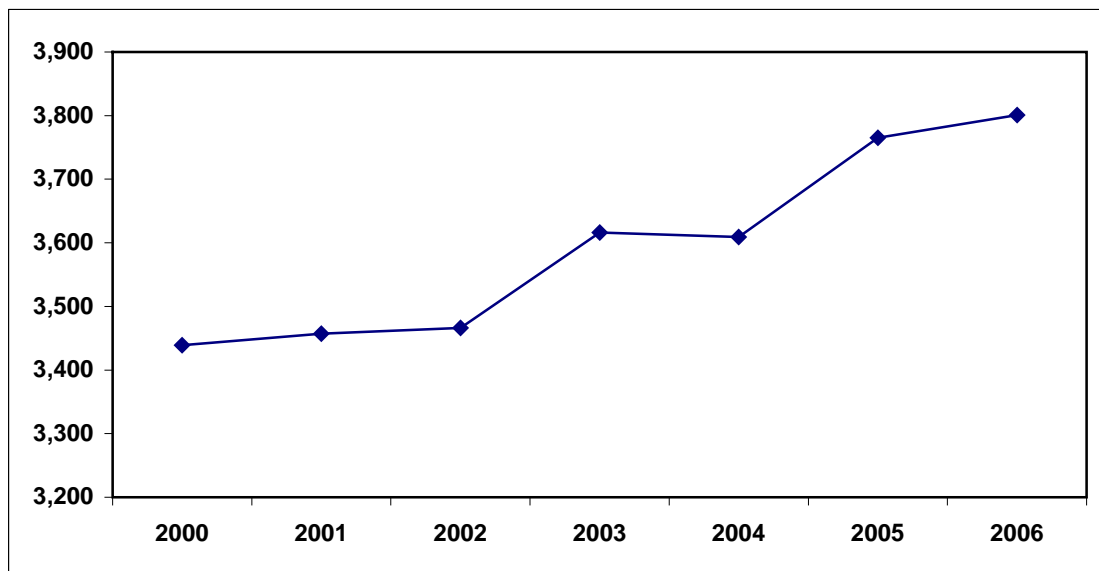


## Business Base

Stirling's business base consists of 3,800 business units across the Council area. Figure 1 shows that Stirling's business base has experienced strong growth since 2000. The business base grew by eleven per cent between 2000 and 2006, more than double the five per cent average rate of growth for Scotland as a whole.



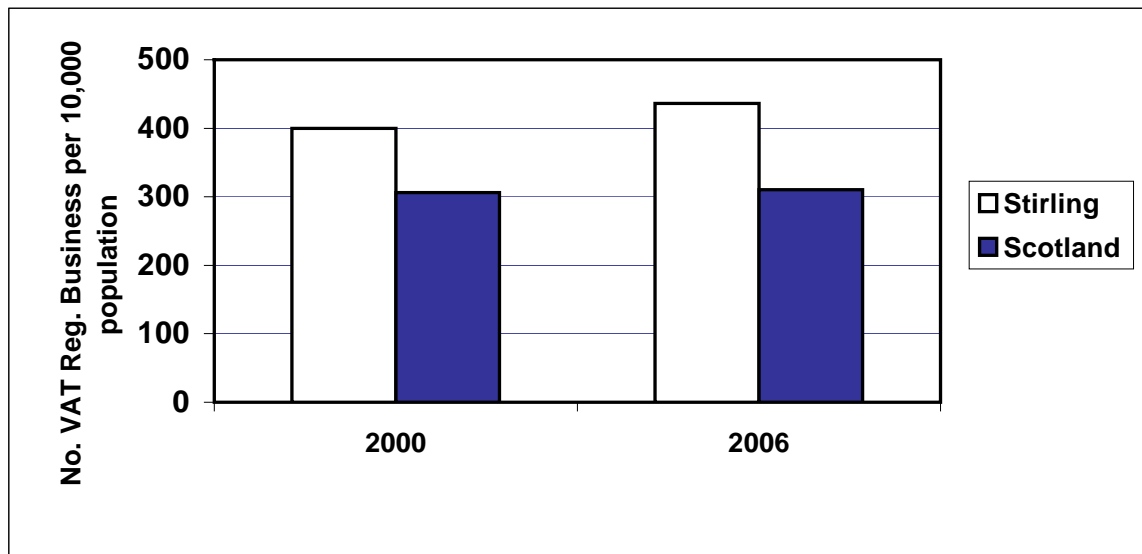
**Figure 1: Number of Business Units, Stirling, 2000 – 2006**



Source: Annual Business Inquiry – Workplace Analysis (Nomis)

Figure 2 shows that Stirling has a thriving business base with 436 VAT registered businesses per 10,000 population, substantially higher than the Scottish average of 310 per 10,000 population.

**Figure 2: Number of VAT Registered Businesses per 10,000 Population**



Source: VAT Registrations and De-Registrations (Nomis)

Figure 3 below provides a breakdown of Stirling's business base by employee size category in comparison to the Scotland average, and also shows the proportion of employees who work for businesses in each size category. The table shows that:

- The majority of business units in Stirling (83 per cent) have 1-10 employees.
- Stirling has a higher proportion of its workforce employed by business units with 1-10 employees than the Scotland average, and a lower proportion employed by business units with 11-199 employees.
- While just one per cent of businesses in Stirling employ 200 or more people, these businesses account for over a third (35 per cent) of all employment in the Council area.

**Figure 3: Business Units and Employees by Business Size Category, Stirling and Scotland, 2006**

Business Size Category	Stirling		Scotland	
	% <i>business units</i>	% <i>employees</i>	% <i>business units</i>	% <i>employees</i>
1-10 employees	83	21	80	19
11-49 employees	14	24	15	25
50-199 employees	3	19	3	23
200+ employees	1	35	1	33

Source: Annual Business Inquiry 2006 – Workplace Analysis (Nomis)

Note: Figures may not sum 100 per cent due to rounding.

### **Key Employers**

Key private sector employers in the Stirling area include:

- Barbour European
- BioReliance
- Capita
- Falcon Foodservice Equipment
- Forth Electrical
- Gladedale
- Grahams Dairies
- GR Advanced Materials
- Marks & Spencers
- Maxxium
- Morrisons

- Norbord
- Ogilvies
- Prudential
- Sainsbury's Supermarket Ltd
- Superglass
- Tesco Stores Ltd
- United Closures and Plastics

Key public sector employers in the Stirling area include:

- Central Scotland Assessors
- Central Scotland Police
- Forth Valley NHS
- Keep Scotland Beautiful
- Scottish Further Education Unit (Headquarter)
- Scottish Enterprise Forth Valley
- Scottish Environment Protection Agency (Headquarter)
- Stirling Council
- Scottish Institute of Sport (Regional Hub)